

## Zorra Township Arena Rental COVID-19 Protocol



As of July 17, 2020, the Province of Ontario moved to Stage 3 of their plan to reopen. This stage provides more businesses and facilities an opportunity to open and offer services that had been previously unavailable.

The Township of Zorra is now able to open arenas for renters with the following precautions:

### General Precautions:

- A maximum of 50 visitors are permitted per scheduled ice time.
- Access to the facility is limited to on-ice participants only, including players, coaches, trainers and referees. Spectators will not be permitted.
  - When minors are participating, one (1) parent or caregiver is permitted per minor for supervision. Parent/caregivers are also included in the 50-person capacity.
  - Sports organizations may further restrict access of parents or caregivers if it effects their ability to deliver programs.
- All visitors over the age of 2 are required to wear a face covering unless engaged in on-ice physical activities or are exempt for medical reasons.
- Stands will not be available for spectator viewing.
- If possible, limit use of washrooms to participants only.
- Read and follow posted signs or directions from facility staff.
- Facility bookings will not be processed in-person. Bookings will be coordinated via phone or email only. (519-485-2793 ext. 7223 or [booking@zorra.ca](mailto:booking@zorra.ca))
- Maintain 2 metres physical distance from members of other households.
- Wash hands or use alcohol-based hand sanitizer frequently.
- Do not enter the facility if:
  - You have travelled outside Ontario in the last 14 days.
  - You have symptoms of COVID-19 or are feeling unwell.
  - Someone in your household has COVID-19 symptoms in the past 14 days.
  - If anyone in your household has been exposed to someone who has or is recovering from COVID-19.

### Arriving and Departing the Arena:

- Come ready to skate. Change rooms and washrooms will not be available ~~for changing~~ prior to skating.
- For contact tracing, groups must record all participants arriving for their scheduled rental time on a provided form. Completed forms will be placed in a secured drop box and kept at the facility.
- Rental groups will be permitted to enter the lobby to put on skates 15 minutes before their scheduled ice time.

## Zorra Township Arena Rental COVID-19 Protocol



- The main entrance will remain locked to visitors before this time and locked at the beginning of the scheduled ice time.
- Upon entry to the building, groups will flow in one direction through a series of controlled spaces. This will allow arena staff to disinfect areas before and after each group.
- When the rink is cleared of the previous renters and arena staff have disinfecting high touch surfaces, the next group will enter the ice staging area. Shelving will be provided near the ice to place participant belongings. Do not bring valuables to the arena, these areas will be unsupervised.
- The lobby will be cleared of participants, coaches, parents/caregivers and belongings to allow for cleaning by arena staff.
- Groups may now access the ice for their scheduled ice time.
- Following their ice time, groups are asked to promptly leave the ice surface, collect their belongings, and proceed through the marked exit to an assigned changeroom(s).
- Users will have 15 minutes from the end of their ice time to change and exit the facility through the designated exit. Showers will not be available following rentals.
- Please remain physically distanced (2 metres) from members of other households, including in the parking lot while departing.

### Sports Restrictions:

- Prolonged or deliberate contact while playing sports is not permitted.
- Leagues must contain no more than 50 participants. If participants in a league exceed 50, the league may divide into smaller groups of no more than 50. Players are not ~~yet~~ permitted to play against players outside of their league or group.
- Groups or Organizations with storage at the facility must arrange to distribute equipment and uniforms prior to the start of their season. Access to on-site storage will not be available during ice rentals.

The Township of Zorra remains committed to providing a safe and positive experience for user groups. Staff will continue to follow guidance issued by Southwestern Public Health and orders from the Province of Ontario. Renters and organizations are responsible for adhering to this policy. Deliberately not complying with this policy may result in cancellation of ice time(s).

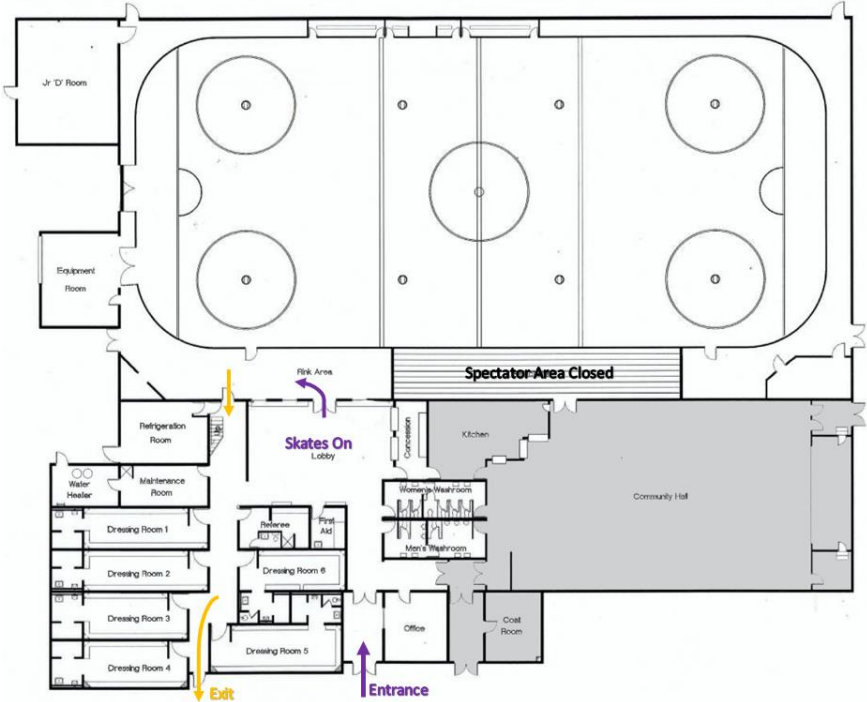
Thank you for your cooperation,

Matthew Brown  
Director of Recreation & Facilities  
519-485-2490 ext. 7243 or [mbrown@zorra.ca](mailto:mbrown@zorra.ca)

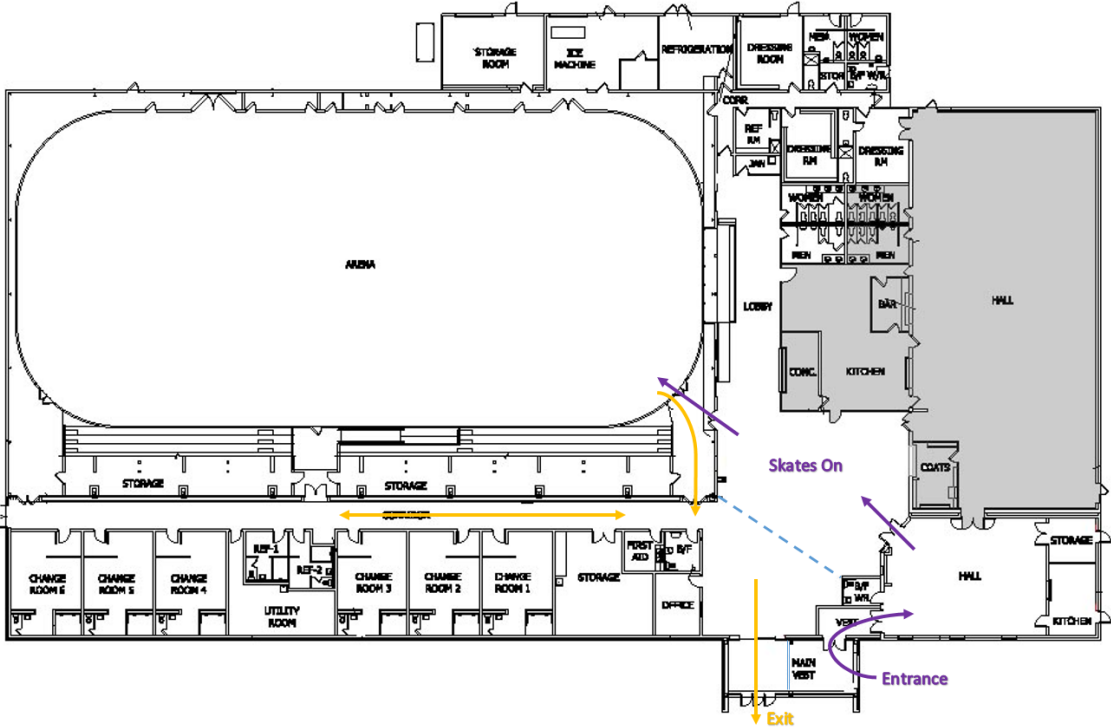
# Facility Maps



## THAMESFORD DISTRICT RECREATION CENTRE



## EMBRO ZORRA COMMUNITY CENTRE



# Guest Attendance Tracking



Please record information of all persons who enter the facility during your rental, including minors. The capacity shall not exceed 50 people.

<b>Rental Date:</b> _____		<b>Group/Renter Name:</b> _____	
<b>Rental Time:</b> _____		<b>Facility:</b> _____	
Name of Participant		Phone Number	
1.			
2.			
3.			
4.			
5.			
6.			
7.			
8.			
9.			
10.			
11.			
12.			
13.			
14.			
15.			
16.			
17.			
18.			
19.			
20.			
21.			
22.			
23.			
24.			

# Guest Attendance Tracking



Name of Participant <i>(continued)</i>	Phone Number
25.	
26.	
27.	
28.	
29.	
30.	
31.	
32.	
33.	
34.	
35.	
36.	
37.	
38.	
39.	
40.	
41.	
42.	
43.	
44.	
45.	
46.	
47.	
48.	
49.	
50.	

# Zorra Township Arena Rental COVID-19 Protocol



## References

Ontario – A Framework for Reopening Our Province Stage 3

<https://files.ontario.ca/mof-framework-reopening-province-stage-3-en-2020-07-13-v2.pdf>

Ontario – Guidance for facilities for sports and recreational fitness activities during COVID-19 (August 14 update)

<https://www.ontario.ca/page/guidance-facilities-sports-and-recreational-fitness-activities-during-covid-19>

SWPH – Letter of Instruction for Face Coverings

[https://www.swpublichealth.ca/sites/default/files/ltr\\_swph\\_moh\\_letter\\_of\\_instruction\\_regarding\\_face\\_cove\\_rings\\_-\\_20200730.pdf](https://www.swpublichealth.ca/sites/default/files/ltr_swph_moh_letter_of_instruction_regarding_face_cove_rings_-_20200730.pdf)